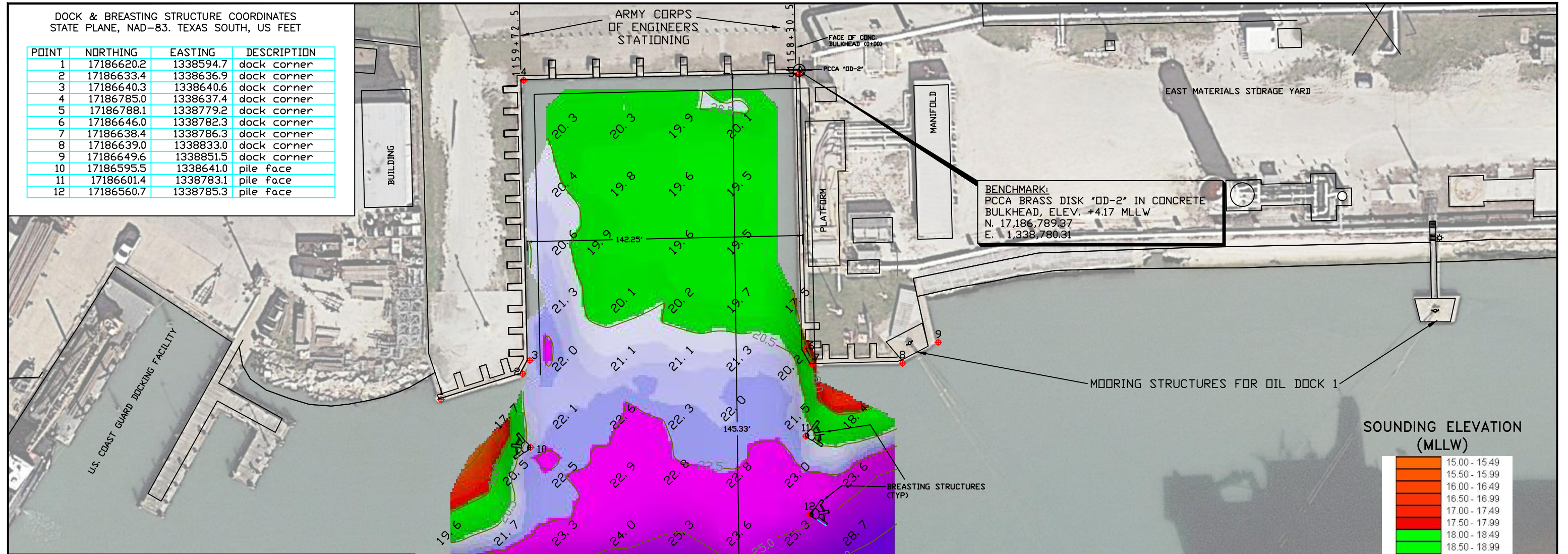


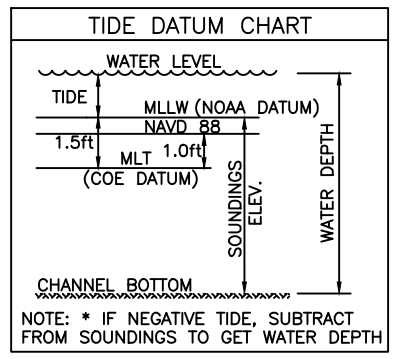
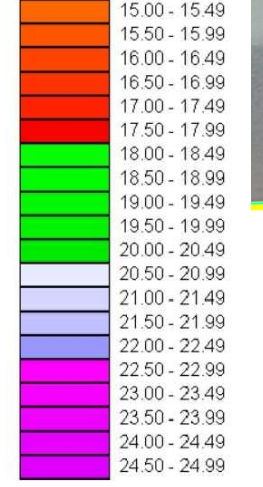
DOCK & BREASTING STRUCTURE COORDINATES  
STATE PLANE, NAD-83, TEXAS SOUTH, US FEET

POINT	NORTHING	EASTING	DESCRIPTION
1	17186620.2	1338594.7	dock corner
2	17186633.4	1338636.9	dock corner
3	17186640.3	1338640.6	dock corner
4	17186785.0	1338637.4	dock corner
5	17186788.1	1338779.2	dock corner
6	17186646.0	1338782.3	dock corner
7	17186638.4	1338786.3	dock corner
8	17186639.0	1338833.0	dock corner
9	17186649.6	1338851.5	dock corner
10	17186595.5	1338641.0	pile face
11	17186601.4	1338783.1	pile face
12	17186560.7	1338785.3	pile face

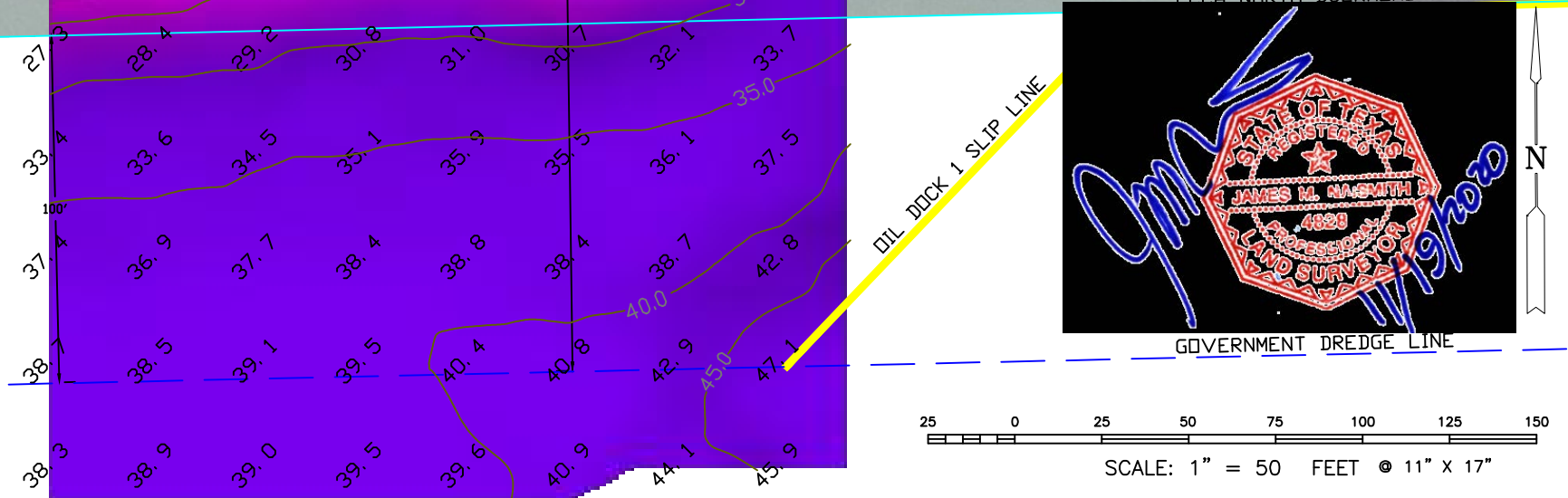


**BENCHMARK:**  
PCCA BRASS DISK "DD-2" IN CONCRETE  
BULKHEAD, ELEV. +4.17 MLLW  
N. 17,186,789.37  
E. 1,338,780.31

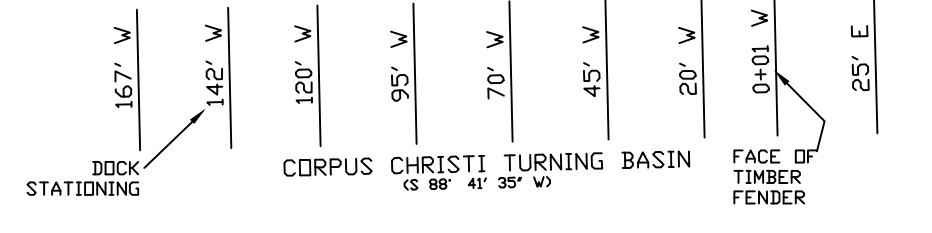
SOUNDING ELEVATION (MLLW)



- NOTES:**
1. LENGTH LIMIT : 313 ft (BARGE USE ONLY)
  2. TOP OF DOCK ELEVATION IS 4.2 FT ABOVE MEAN LOWER LOW WATER (0.0')
  3. SOUNDINGS WERE CONDUCTED ON OCTOBER 15, 2020. BY NAISMITH MARINE SERVICES. SEA FLOOR CONDITIONS ARE SUBJECT TO CHANGE.
  4. THE PORT OF CORPUS CHRISTI ASSUMES NO LIABILITY FOR THE ACCURACY OF THIS INFORMATION. THE INFORMATION DEPICTED ON THIS MAP REPRESENTS THE RESULTS OF SURVEYS MADE ON THE DATE DEPICTED AND CAN ONLY BE CONSIDERED AS INDICATING THE GENERAL CONDITIONS AT THAT TIME. THESE CONDITIONS ARE SUBJECT TO RAPID CHANGE DUE TO SHOALING EVENTS.
  5. ALL READINGS ARE BASED ON THE NATIONAL OCEANIC AND ATMOSPHERIC ADMINISTRATIONS (N.O.A.A.) MEAN LOWER LOW WATER (M.L.L.W.) DATUM (0.0')
  6. TO GET THE DEPTH OF WATER, ADD THE CURRENT TIDE LEVEL TO THE READINGS SHOWN. (SEE TIDE DATUM CHART)



2007 F.M. 3036, Rockport, Texas 78382  
www.tbsmith.com  
TBPLES Firm No. 10110201



NO.	DATE	REVISION



PORT OF CORPUS CHRISTI AUTHORITY		
SOUNDINGS OIL DOCK 2		
SCALE: 1" = 50'	PLAN	DATE: OCT. 2020
DWN. BY: CDW		