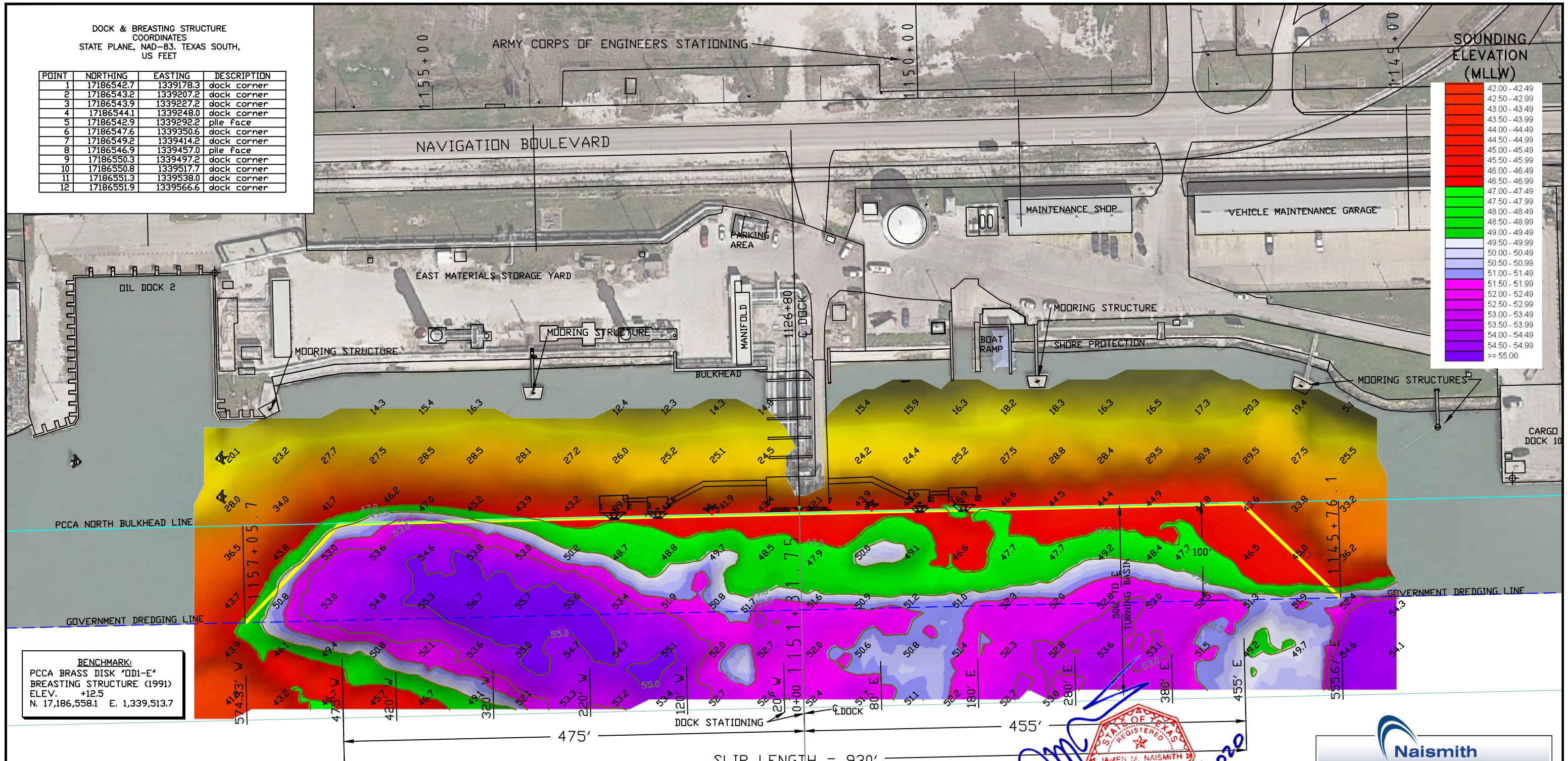
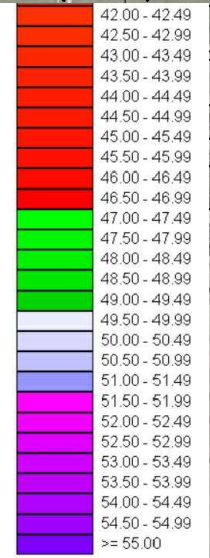


DOCK & BREASTING STRUCTURE  
COORDINATES  
STATE PLANE, NAD-83, TEXAS SOUTH,  
US FEET

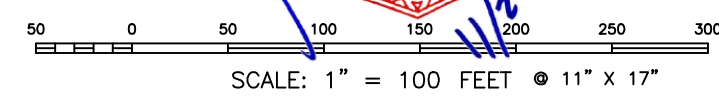
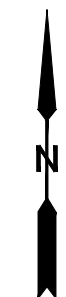
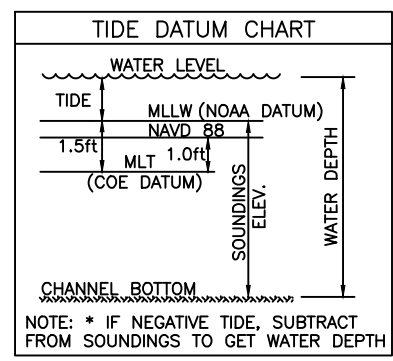
POINT	NORTHING	EASTING	DESCRIPTION
1	17186542.7	1339178.3	dock corner
2	17186543.2	1339207.2	dock corner
3	17186543.9	1339227.2	dock corner
4	17186544.1	1339248.0	dock corner
5	17186542.9	1339292.2	pile face
6	17186547.6	1339350.6	dock corner
7	17186549.2	1339414.2	dock corner
8	17186546.9	1339457.0	pile face
9	17186550.3	1339497.2	dock corner
10	17186550.8	1339517.7	dock corner
11	17186551.3	1339538.0	dock corner
12	17186551.9	1339566.6	dock corner

SOUNDING  
ELEVATION  
(MLLW)



**BENCHMARK:**  
PCCA BRASS DISK "DD1-E"  
BREASTING STRUCTURE (1991)  
ELEV. +12.5  
N. 17,186,558.1 E. 1,339,513.7

- NOTES:**
1. VESSEL LENGTH LIMIT IS 1,000 FEET.
  2. TOP OF DOCK ELEVATION IS 14.2 FT ABOVE MEAN LOWER LOW WATER (0.0')
  3. SOUNDINGS WERE CONDUCTED ON OCTOBER 29, 2020 BY NAISMITH MARINE SERVICES.
  4. THE PORT OF CORPUS CHRISTI ASSUMES NO LIABILITY FOR THE ACCURACY OF THIS INFORMATION. THE INFORMATION DEPICTED ON THIS MAP REPRESENTS THE RESULTS OF SURVEYS MADE ON THE DATE DEPICTED AND CAN ONLY BE CONSIDERED AS INDICATING THE GENERAL CONDITIONS AT THAT TIME. THESE CONDITIONS ARE SUBJECT TO RAPID CHANGE DUE TO SHOALING EVENTS.
  5. ALL READINGS ARE BASED ON THE NATIONAL OCEANIC AND ATMOSPHERIC ADMINISTRATION (NOAA) MEAN LOWER LOW WATER (MLLW) DATUM, (0.0')
  6. HORIZONTAL DATUM: NAD-83, STATE PLANE, TEXAS SOUTH ZONE, US FEET.
  7. TO GET THE DEPTH OF WATER, ADD THE CURRENT TIDE LEVEL TO THE READINGS SHOWN. (SEE TIDE DATUM CHART).



*James M. Naismith*  
11/8/2020



**Naismith**  
Marine Services, Inc.  
now a part of **TBS T. BAKER SMITH**  
A CENTURY OF SOLUTIONS  
2007 F.M. 3036, Rockport, Texas 78382  
www.tbsmith.com  
TBPLES Firm No. 10110201

NO.	DATE	REVISION

**PORT CORPUS CHRISTI**

**PORT OF CORPUS CHRISTI AUTHORITY**

**SOUNDINGS  
OIL DOCK 1**

SCALE: 1" = 100'  
DWN. BY: CDW

PLAN

DATE: OCT. 2020