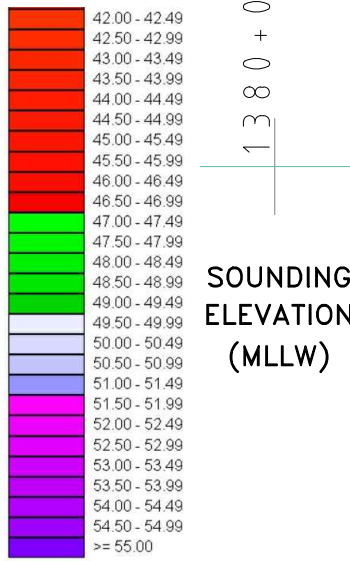
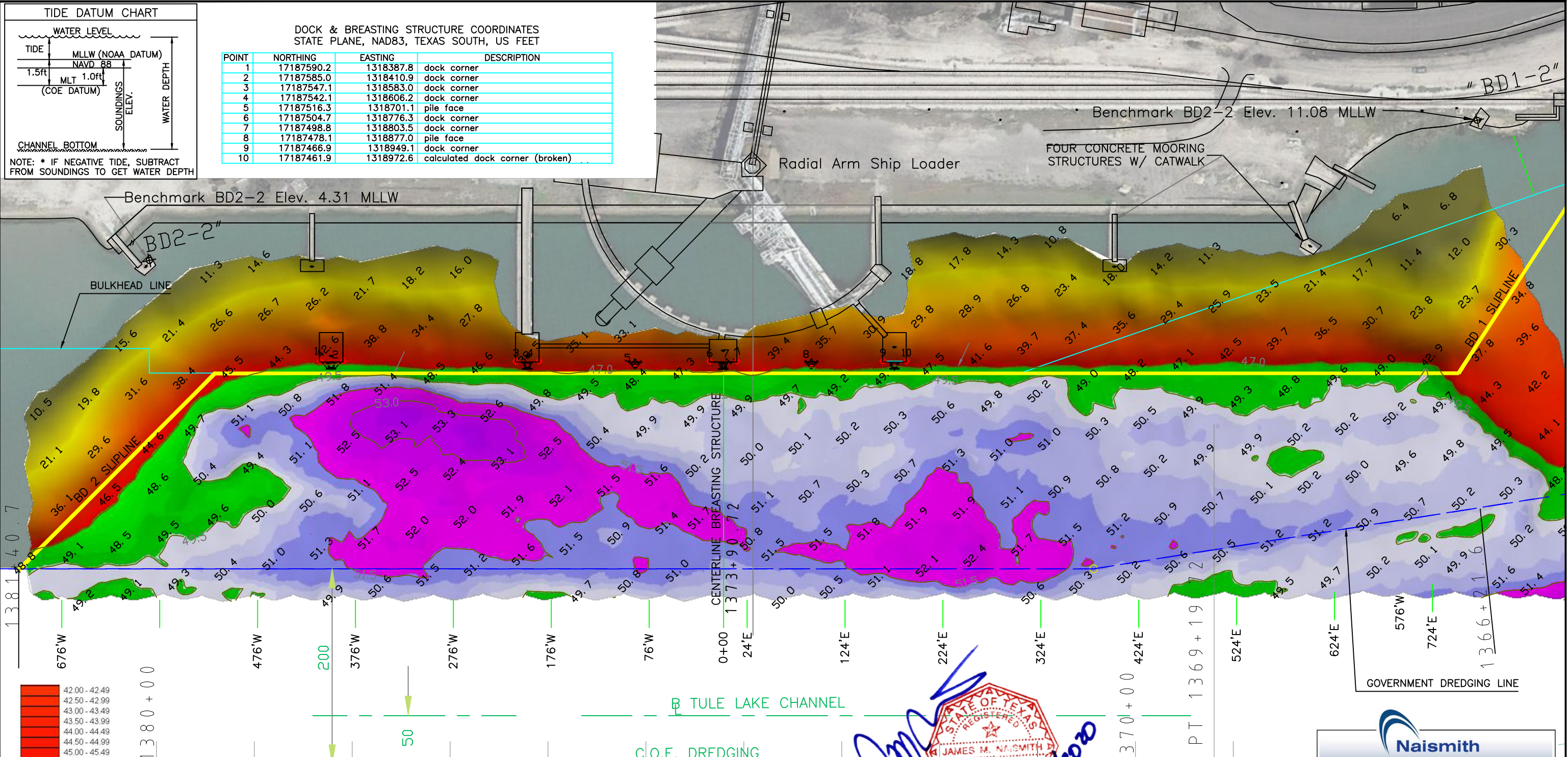
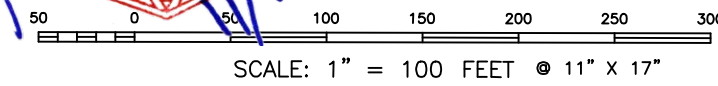
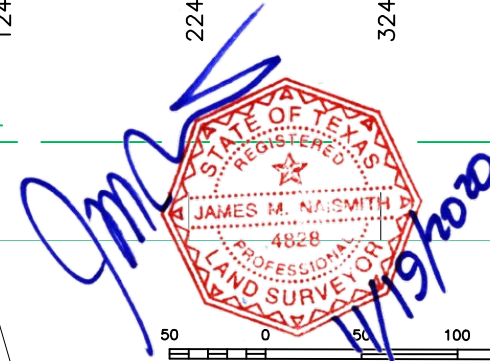


DOCK & BREASTING STRUCTURE COORDINATES  
STATE PLANE, NAD83, TEXAS SOUTH, US FEET

POINT	NORTHING	EASTING	DESCRIPTION
1	17187590.2	1318387.8	dock corner
2	17187585.0	1318410.9	dock corner
3	17187547.1	1318583.0	dock corner
4	17187542.1	1318606.2	dock corner
5	17187516.3	1318701.1	pile face
6	17187504.7	1318776.3	dock corner
7	17187498.8	1318803.5	dock corner
8	17187478.1	1318877.0	pile face
9	17187466.9	1318949.1	dock corner
10	17187461.9	1318972.6	calculated dock corner (broken)



- NOTES:
1. VESSEL LENGTH LIMIT IS 1,270 FEET.
  2. SOUNDINGS WERE CONDUCTED OCTOBER 14, 2020 BY NAISMITH MARINE SERVICES. SEA FLOOR CONDITIONS ARE SUBJECT TO CHANGE.
  3. THE PORT OF CORPUS CHRISTI ASSUMES NO LIABILITY FOR THE ACCURACY OF THIS INFORMATION. THE INFORMATION DEPICTED ON THIS MAP REPRESENTS THE RESULTS OF SURVEYS MADE ON THE DATE DEPICTED AND CAN ONLY BE CONSIDERED AS INDICATING THE GENERAL CONDITIONS AT THAT TIME. THESE CONDITIONS ARE SUBJECT TO RAPID CHANGE DUE TO SHOALING EVENTS.
  4. ALL READINGS ARE BASED ON THE NATIONAL OCEANIC AND ATMOSPHERIC ADMINISTRATION (NOAA) MEAN LOWER LOW WATER (MLLW) DATUM, (O.O')
  5. HORIZONTAL DATUM: NAD-83, STATE PLANE, TEXAS SOUTH ZONE, US FEET.
  6. TO GET THE DEPTH OF WATER, ADD THE CURRENT TIDE LEVEL TO THE READINGS SHOWN. (SEE TIDE DATUM CHART).



2007 F.M. 3036, Rockport, Texas 78382  
www.tbsmith.com  
TBPLES Firm No. 10110201

NO.	DATE	REVISION



PORT OF CORPUS CHRISTI AUTHORITY

**SOUNDINGS  
BULK TERMINAL DOCK 2**

SCALE: 1" = 100'  
DWN. BY: CDW

PLAN

DATE: OCT. 2020